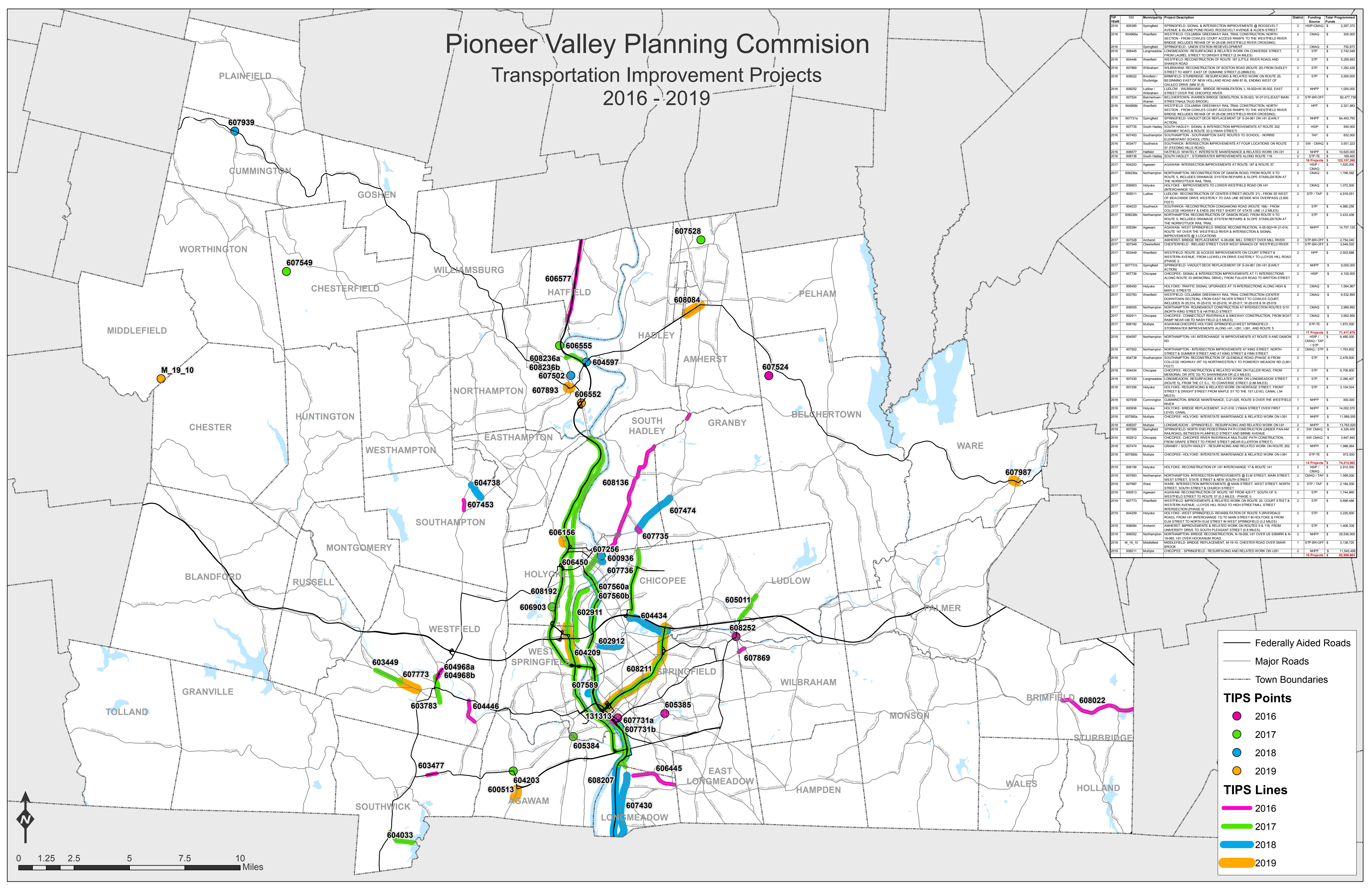


Pioneer Valley Planning Commission Transportation Improvement Projects 2016 - 2019



| FY | Year | SD | Municipality | Project Description | District | Funding Source | Total Programmed Funds |
|------|---------|--------------|--------------|---|----------|------------------|------------------------|
| 2016 | 605386 | Springfield | Springfield | SIGNAL & INTERSECTION IMPROVEMENTS @ ROOSEVELT AVENUE & ISLAND POND ROAD, ROOSEVELT AVENUE & ALDEN STREET | 2 | HSP/CMAQ | 2,297,372 |
| 2016 | 604968a | Westfield | Westfield | WESTFIELD COLUMBIA GREENWAY RAIL TRAIL CONSTRUCTION NORTH SECTION - FROM COWLES COURT ACCESS RAMPS TO THE WESTFIELD RIVER BRIDGE INCLUDES REPAIRS OF W-25-236 (WESTFIELD RIVER CROSSING) | 2 | CMAQ | 300,000 |
| 2016 | 606445 | Longmeadow | Longmeadow | SPRINGFIELD - UNION STATION REDEVELOPMENT | 2 | CMAQ | 750,873 |
| 2016 | 604446 | Westfield | Westfield | LONGMEADOW - RESURFACING & RELATED WORK ON CONVERSE STREET, FROM LABEL STREET TO DWIGHT STREET (2.9 MILES) | 2 | STP | 2,742,048 |
| 2016 | 607899 | Wilbraham | Wilbraham | WESTFIELD - RECONSTRUCTION OF ROUTE 187 (LITTLE RIVER ROAD) AND SHAKER ROAD | 2 | STP | 5,258,083 |
| 2016 | 608022 | Brimfield | Sturbridge | WESTFIELD - RECONSTRUCTION OF BOSTON ROAD (ROUTE 20) FROM DUDLEY STREET TO 400 FT. EAST OF GUMANE STREET (0.28 MILES) | 2 | STP | 1,292,428 |
| 2016 | 608232 | Brimfield | Sturbridge | WESTFIELD - RECONSTRUCTION OF ROUTE 187 (LITTLE RIVER ROAD) AND SHAKER ROAD | 2 | STP | 3,500,000 |
| 2016 | 608234 | Wilbraham | Wilbraham | WESTFIELD - RECONSTRUCTION OF BOSTON ROAD (ROUTE 20) FROM DUDLEY STREET TO 400 FT. EAST OF GUMANE STREET (0.28 MILES) | 2 | NHPP | 1,000,000 |
| 2016 | 607524 | Southampton | Southampton | ROUTE 141 OVER THE WESTFIELD RIVER & INTERSECTION AT SIGNAL | 2 | STP-BR-OFF | 82,477,739 |
| 2016 | 604968b | Westfield | Westfield | WESTFIELD COLUMBIA GREENWAY RAIL TRAIL CONSTRUCTION NORTH SECTION - FROM COWLES COURT ACCESS RAMPS TO THE WESTFIELD RIVER BRIDGE INCLUDES REPAIRS OF W-25-236 (WESTFIELD RIVER CROSSING) | 2 | HPP | 2,321,983 |
| 2016 | 607731a | Springfield | Springfield | SPRINGFIELD - VIADUCT DECK REPLACEMENT OF S.24-91 ON I-91 (EARLY ACTION) | 2 | NHPP | 84,493,750 |
| 2016 | 607731b | Springfield | Springfield | SOUTH HADLEY - SIGNAL & INTERSECTION IMPROVEMENTS AT ROUTE 202 (GRANBY ROAD) & ROUTE 33 (LYMAN STREET) | 2 | HSP | 550,000 |
| 2016 | 607453 | Southampton | Southampton | SOUTHAMPTON - SOUTHAMPTON SAFE ROUTES TO SCHOOL - NORRIS ELEMENTARY SCHOOL (75%) | 2 | TAP | 832,000 |
| 2016 | 603477 | Southwick | Southwick | SOUTHAMPTON - INTERSECTION IMPROVEMENTS AT FOUR LOCATIONS ON ROUTE 27 (SECOND HILLS ROAD) | 2 | SW - CMAQ | 3,551,223 |
| 2016 | 606577 | Hatfield | Hatfield | HATFIELD - INTERSTATE MAINTENANCE & RELATED WORK ON I-91 | 2 | NHPP | 10,620,000 |
| 2016 | 608136 | South Hadley | South Hadley | SOUTH HADLEY - STORMWATER IMPROVEMENTS ALONG ROUTE 116 | 2 | STP-TE | 169,400 |
| 2017 | 604203 | Agawam | Agawam | AGAWAM - INTERSECTION IMPROVEMENTS AT ROUTE 187 & ROUTE 57 | 2 | HSP / CMAQ | 122,197,398 |
| 2017 | 608236a | Northampton | Northampton | NORTHAMPTON - RECONSTRUCTION OF DAMON ROAD, FROM ROUTE 9 TO ROUTE 5, INCLUDES DRAINAGE SYSTEM REPAIRS & SLOPE STABILIZATION AT THE NORWOTTSLOK RAIL TRAIL | 2 | CMAQ | 1,766,592 |
| 2017 | 608003 | Holyoke | Holyoke | HOLYOKE - IMPROVEMENTS TO LOWER WESTFIELD ROAD ON I-91 INTERCHANGE 15 | 2 | CMAQ | 1,072,500 |
| 2017 | 605011 | Ludlow | Ludlow | LUDLOW - RECONSTRUCTION OF CENTER STREET (ROUTE 21) - FROM 35 WEST OF BEACHSIDE DRIVE WESTERLY TO GAS LINE BESIDE MTA OVERPASS (3.50 FEET) | 2 | STP / TAP | 4,918,051 |
| 2017 | 604033 | Southwick | Southwick | SOUTHAMPTON - RECONSTRUCTION OF CONCORD ROAD (ROUTE 186) - FROM COLLEGE HIGHWAY & END OF SHORT CUT STATE LINE (1.1 MILES) | 2 | STP | 4,980,296 |
| 2017 | 608236b | Northampton | Northampton | NORTHAMPTON - RECONSTRUCTION OF DAMON ROAD, FROM ROUTE 9 TO ROUTE 5, INCLUDES DRAINAGE SYSTEM REPAIRS & SLOPE STABILIZATION AT THE NORWOTTSLOK RAIL TRAIL | 2 | STP | 3,433,418 |
| 2017 | 605384 | Agawam | Agawam | AGAWAM - WEST SPRINGFIELD - BRIDGE RECONSTRUCTION, A-05-002-W-21-014, ROUTE 141 OVER THE WESTFIELD RIVER & INTERSECTION AT SIGNAL | 2 | NHPP | 14,759,120 |
| 2017 | 607528 | Amherst | Amherst | AMHERST - BRIDGE REPLACEMENT, A-08-028, MILL STREET OVER MILL RIVER IMPROVEMENTS @ 3 LOCATIONS | 2 | STP-BR-OFF | 2,754,440 |
| 2017 | 607549 | Chesterfield | Chesterfield | CHESTERFIELD - IRELAND STREET OVER WEST BRANCH OF WESTFIELD RIVER | 1 | STP-BR-OFF | 3,449,520 |
| 2017 | 603449 | Westfield | Westfield | WESTFIELD - ROUTE 20 ACCESS IMPROVEMENTS ON COURT STREET & WESTERN AVENUE, FROM LLEWELLYN DRIVE EASTERLY TO LLOYDS HILL ROAD (PHASE II) | 2 | HPP | 2,593,688 |
| 2017 | 607731c | Springfield | Springfield | SPRINGFIELD - VIADUCT DECK REPLACEMENT OF S.24-91 ON I-91 (EARLY ACTION) | 2 | NHPP | 9,000,000 |
| 2017 | 607736 | Chicopee | Chicopee | CHICOPEE - SIGNAL & INTERSECTION IMPROVEMENTS AT 11 INTERSECTIONS ALONG ROUTE 33 (MEMORIAL DRIVE), FROM FULLER ROAD TO BRITON STREET | 2 | HSP | 4,100,000 |
| 2017 | 606450 | Holyoke | Holyoke | HOLYOKE - TRAFFIC SIGNAL UPGRADES AT 15 INTERSECTIONS ALONG HIGH & MAPLE STREETS | 2 | CMAQ | 1,564,897 |
| 2017 | 603783 | Westfield | Westfield | WESTFIELD - COLUMBIA GREENWAY RAIL TRAIL CONSTRUCTION CENTER DOWNTOWN SECTION, FROM EAST SILVER STREET TO COWLES COURT, INCLUDES REPAIRS OF W-25-236, W-25-237, W-25-238 & W-25-239 | 2 | CMAQ | 6,532,895 |
| 2017 | 606555 | Northampton | Northampton | NORTHAMPTON - ROUNDABOUT CONSTRUCTION AT INTERSECTION ROUTES 5/10 (NORTH KING STREET) & HATFIELD STREET | 2 | CMAQ | 2,989,892 |
| 2017 | 602911 | Chicopee | Chicopee | CHICOPEE - CONCRETE OVERPASS & BIKEWAY CONSTRUCTION, FROM BOAT RAMP NEAR 100 TO NASH FIELD (2.5 MILES) | 2 | CMAQ | 3,302,850 |
| 2017 | 608192 | Multiple | Multiple | AGAWAM - CHICOPEE - HOLYOKE - SPRINGFIELD - WEST SPRINGFIELD - STORMWATER IMPROVEMENTS ALONG I-91, I-291, I-391, AND ROUTE 5 | 2 | STP-TE | 1,872,000 |
| 2018 | 604597 | Northampton | Northampton | NORTHAMPTON - I-91 INTERCHANGE 19 IMPROVEMENTS AT ROUTE 9 AND DAMON RD | 2 | STP / CMAQ / TAP | 71,417,879 |
| 2018 | 607502 | Northampton | Northampton | NORTHAMPTON - INTERSECTION IMPROVEMENTS AT KING STREET, NORTH STREET & SUMMER STREET AND AT KING STREET & FANN STREET | 2 | CMAQ / STP | 1,763,802 |
| 2018 | 604736 | Southampton | Southampton | SOUTHAMPTON - RECONSTRUCTION OF GLENDALE ROAD (PHASE II) FROM COLLEGE HIGHWAY (RT 10) NORTHWESTERLY TO POMEROY MEADOW RD (3.801 FEET) | 2 | STP | 2,476,600 |
| 2018 | 604434 | Chicopee | Chicopee | CHICOPEE - RECONSTRUCTION & RELATED WORK ON FULLER ROAD, FROM MEMORIAL DR (RT 33) TO SHAWINGAN DR (2.0 MILES) | 2 | STP | 6,706,800 |
| 2018 | 607430 | Longmeadow | Longmeadow | LONGMEADOW - RESURFACING & RELATED WORK ON LONGMEADOW STREET (ROUTE 9), FROM THE CT S.L. TO CONVERSE STREET (2.88 MILES) | 2 | STP | 2,390,407 |
| 2018 | 607286 | Holyoke | Holyoke | HOLYOKE - RESURFACING & RELATED WORK ON HERIAGE STREET, FRONT STREET & DWIGHT STREET FROM MAPLE ST TO THE 1ST LEVEL CANAL (.54 MILES) | 2 | STP | 3,104,024 |
| 2018 | 607939 | Cummington | Cummington | CUMMINGTON - BRIDGE MAINTENANCE, C-21-025, ROUTE 9 OVER THE WESTFIELD RIVER | 1 | NHPP | 300,000 |
| 2018 | 600306 | Holyoke | Holyoke | HOLYOKE - BRIDGE REPLACEMENT, H-21-018, LYMAN STREET OVER FIRST LEVEL CANAL | 2 | NHPP | 14,002,570 |
| 2018 | 607560a | Multiple | Multiple | CHICOPEE - HOLYOKE - INTERSTATE MAINTENANCE & RELATED WORK ON I-91 | 2 | NHPP | 11,989,955 |
| 2018 | 608207 | Multiple | Multiple | LONGMEADOW - SPRINGFIELD - RESURFACING AND RELATED WORK ON I-91 | 2 | NHPP | 13,783,520 |
| 2018 | 607599 | Springfield | Springfield | SPRINGFIELD - NORTH END PIERS TRAIL PATH CONSTRUCTION (UNDER PANAMA RAILROAD) BETWEEN PLAINFIELD STREET AND BIRNE AVENUE | 2 | SW CMAQ | 4,328,400 |
| 2018 | 602912 | Chicopee | Chicopee | CHICOPEE - CHICOPEE RIVER RIVERWALK MULTIPLE PATH CONSTRUCTION, FROM GRAPE STREET TO FRONT STREET (NEAR ELLESTON STREET) | 2 | SW CMAQ | 3,947,840 |
| 2018 | 607474 | Multiple | Multiple | AGAWAM - RECONSTRUCTION OF ROUTE 187 FROM 425 FT. SOUTH OF S. WESTFIELD STREET TO ROUTE 57 (0.3 MILES - PHASE I) | 2 | STP | 1,988,064 |
| 2018 | 607560b | Multiple | Multiple | CHICOPEE - HOLYOKE - INTERSTATE MAINTENANCE & RELATED WORK ON I-91 | 2 | STP-TE | 972,000 |
| 2019 | 606156 | Holyoke | Holyoke | HOLYOKE - RECONSTRUCTION OF I-91 INTERCHANGE 17 & ROUTE 141 | 2 | HSP / CMAQ | 2,912,000 |
| 2019 | 607883 | Northampton | Northampton | NORTHAMPTON - INTERSECTION IMPROVEMENTS @ ELM STREET / MAIN STREET, WEST STREET, STATE STREET & NEW SOUTH STREET | 2 | CMAQ / TAP | 1,588,000 |
| 2019 | 607987 | Ware | Ware | WARE - INTERSECTION IMPROVEMENTS @ MAIN STREET, WEST STREET, NORTH STREET, SOUTH STREET & CHURCH STREET | 2 | STP / TAP | 2,184,000 |
| 2019 | 600513 | Agawam | Agawam | AGAWAM - RECONSTRUCTION OF ROUTE 187 FROM 425 FT. SOUTH OF S. WESTFIELD STREET TO ROUTE 57 (0.3 MILES - PHASE II) | 2 | STP | 1,744,960 |
| 2019 | 607773 | Westfield | Westfield | WESTFIELD - IMPROVEMENTS & RELATED WORK ON ROUTE 20, COURT STREET & WESTERN AVENUE, LLOYDS HILL ROAD TO HIGH STREET/MILL STREET INTERSECTION (PHASE I) | 2 | STP | 5,698,486 |
| 2019 | 604209 | Holyoke | Holyoke | HOLYOKE - WEST SPRINGFIELD - REHABILITATION OF ROUTE 5 (RIVERVALE ROAD), FROM I-91 INTERCHANGE 13 TO MAIN STREET IN HOLYOKE & FROM ELM STREET TO NORTH ELM STREET IN WEST SPRINGFIELD (2.2 MILES) | 2 | STP | 3,325,600 |
| 2019 | 608084 | Amherst | Amherst | AMHERST - IMPROVEMENTS & RELATED WORK ON ROUTES 9 & 116, FROM UNIVERSITY DRIVE TO SOUTH PLEASANT STREET (0.8 MILES) | 2 | STP | 1,406,319 |
| 2019 | 606552 | Northampton | Northampton | NORTHAMPTON - BRIDGE RECONSTRUCTION, H-16-029, I-91 OVER US 5/BRR & N-19-000, I-91 OVER HOOKANUM ROAD | 2 | NHPP | 29,536,000 |
| 2019 | M_19_10 | Middlefield | Middlefield | MIDDLEFIELD - BRIDGE REPLACEMENT, M-19-10, CHESTER ROAD OVER SMAR BROOK | 1 | STP-BR-OFF | 3,378,700 |
| 2019 | 608211 | Multiple | Multiple | CHICOPEE - SPRINGFIELD - RESURFACING AND RELATED WORK ON I-291 | 2 | NHPP | 11,545,488 |
| 2019 | 608211 | Multiple | Multiple | CHICOPEE - SPRINGFIELD - RESURFACING AND RELATED WORK ON I-291 | 2 | STP | 62,999,400 |

— Federally Aided Roads
 — Major Roads
 - - - Town Boundaries

TIPS Points
 ● 2016
 ● 2017
 ● 2018
 ● 2019

TIPS Lines
 — 2016
 — 2017
 — 2018
 — 2019

